

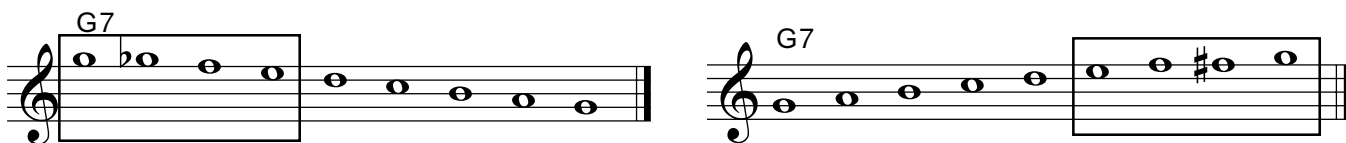
# Jazz Etude #4

By  
Per Danielsson

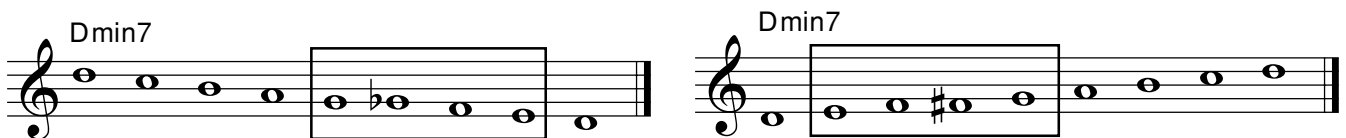
## Bebop Scales

There are three different Bebop scales, Dorian Bebop, Mixolydian Bebop and Major Bebop. Each one of these scales consists of eight notes due to an added half step. Because of that extra half step the scale becomes more chromatic which also makes it naturally melodic. These scales fit strongly over the changes and their use results in a more “Bebopish” sound. They are especially melodic when played descending.

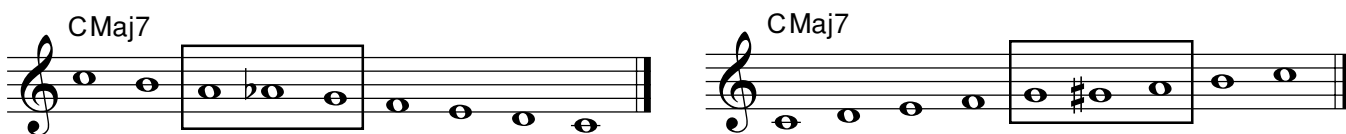
**Mixolydian Bebop** differs from the regular Mixolydian in that it has an extra note between the root and the flatted seventh scale degree. This chromatic part of the scale is very strong when played over a dominant seventh chord.



**Dorian Bebop** has an added note between the minor third and the fourth scale degree. In a ii-V-I progression the Dorian Bebop and the Mixolydian Bebop are the same scale but with a different starting note.



**Major Bebop** is played against a Major chord. It has an extra note between the fifth and the sixth scale degree.



### Practice hints.

1. Work out a fingering that works well for you.
2. Practice the etude in different tempos. Start slowly and don't speed up the tempo until you are sure about all the notes. Use a metronome.
3. When you are comfortable with the voicings, try to be more rhythmic with your left hand.
4. Make it musical. Try to play with a nice relaxed swing feel.
5. Analyze the etude and locate the chromatic parts of the scale.

**C**

Dmin7      G13      C<sup>6</sup>      C<sup>6</sup>

**F**

Gmin7      C9      FMaj7      FMaj7

**B $\flat$**

Cmin7      F13      B $\flat$ <sup>6</sup>      B $\flat$ <sup>6</sup>

**E $\flat$**

Fmin7      B $\flat$ 7      E $\flat$ <sup>6</sup>      E $\flat$ <sup>6</sup>

**A $\flat$**

B $\flat$ min9      E $\flat$ 7      A $\flat$ Maj7      A $\flat$ Maj7

**D $\flat$**

E $\flat$ min9      A $\flat$ 13      D $\flat$ Maj9      D $\flat$ Maj9

# G

Musical notation for the G major system, consisting of a treble and bass clef staff. The bass clef staff contains four chords: Abmin7, Db7, GbMaj7, and GbMaj7. The treble clef staff contains a melodic line with eighth and sixteenth notes.

# B

Musical notation for the B major system, consisting of a treble and bass clef staff. The bass clef staff contains four chords: C#min9 with a triplet, B9 with a triplet, and B9 with a triplet. The treble clef staff contains a melodic line with eighth and sixteenth notes.

# E

Musical notation for the E major system, consisting of a treble and bass clef staff. The bass clef staff contains four chords: F#min7, B13, E9, and E9. The treble clef staff contains a melodic line with eighth and sixteenth notes.

# A

Musical notation for the A major system, consisting of a treble and bass clef staff. The bass clef staff contains four chords: Bmin9, AMaj7 with a triplet, and AMaj7. The treble clef staff contains a melodic line with eighth and sixteenth notes.

# D

Musical notation for the D major system, consisting of a treble and bass clef staff. The bass clef staff contains four chords: Emin9 with a triplet, A13, DMaj9, and DMaj9. The treble clef staff contains a melodic line with eighth and sixteenth notes.

# G

Musical notation for the G major system, consisting of a treble and bass clef staff. The bass clef staff contains four chords: Amin7, D9, GMaj7, and GMaj7. The treble clef staff contains a melodic line with eighth and sixteenth notes.